

# **Manual Instruction**

## **Manual Multifunction Binder**

### **M600**

# Manual Multifunction Binder Item: M600

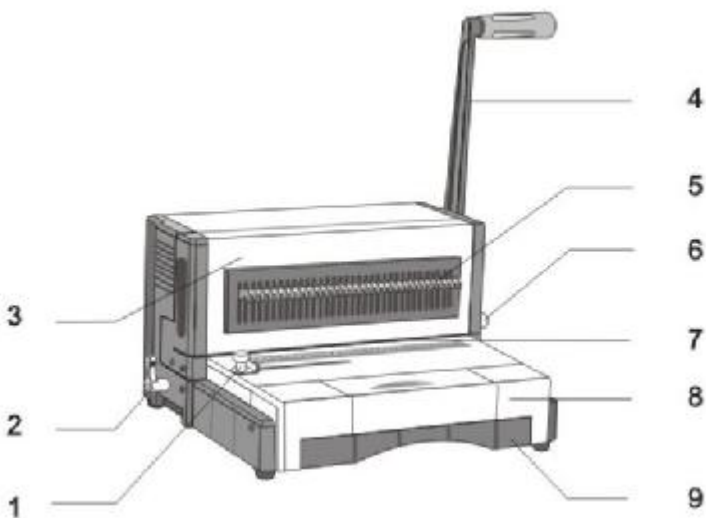
## 1. Check

Main body 1pc

Paper flat 1pc

Manual Instruction 1pc

## 2. Structure



- 1.Paper stop      2.Die set lock      3.Die set      4.Punching handle  
5.Disengagement pins  
6.Margin adjuster    7.Paper entrance    8.Paper flat    9.Waste paper drawer

### 3. Features

1. Various interchangeable die sets can be chosen for different punching purpose and combined binder S600 will conveniently binding punched documents.
2. Available Dies sets can be fit for following punching and binding purpose:

21 holes plastic comb

10 Holes Greenbinder

35 round / square holes double wire, pitch 1/3 inch

23 round / square holes double wire, pitch 1/2 inch

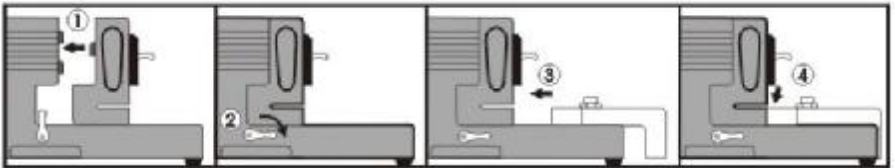
49 round holes coil, pitch 6mm

·The holes number in above list suitable for the longer edge of A4 size paper, for how to punch special length paper please see Special size paper punching ②.

### 4. Installation and Die set replacement

·This machine is heavy duty design, working table should be steady.

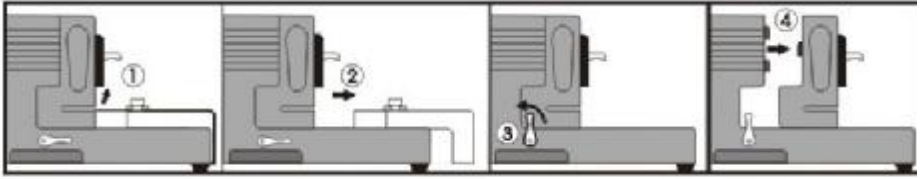
·If there is no die set on main body, to install die set according to the following Figs.



- ① Push Die set into the main body;
- ② Turn Die set lock to position CLOSE
- ③ Inset paper flat according to Fig show.
- ④ Push paper flat according to Fig show to connect it with main body, Die set installation finished.

·In the case of moving the machine, emptying waste paper drawer or replacing die set, Paper flat should be taken off from the main body first:

②

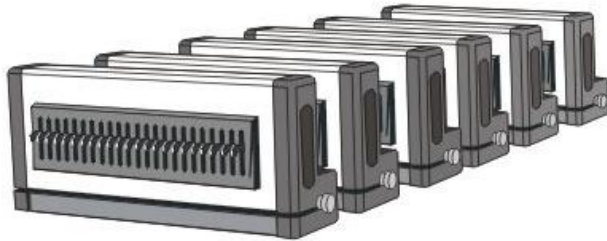


- ① Raise the front edge according to Fig shows to make sure paper flat has take off the main body
- ② Draw out the paper flat
- ③ Turn Die set lock to position OPEN
- ④ Draw out Die set

## 5. Die set choose and buy

·We developed 6 sets of normally used Die sets for choice

·When Die set bellow can't fit your requirement, please email us for customization.



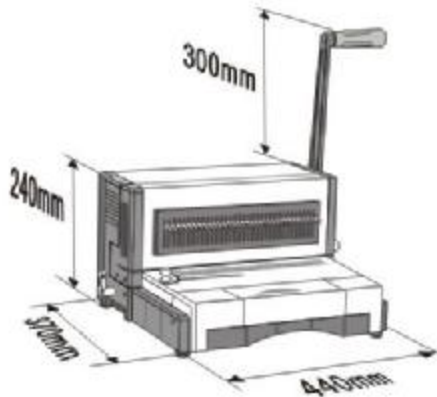
Item	Description	Punching holes	Pitch	Hole size
DIE-F21	21 Hole dies set	21 Rectangle	14.25mm	3x8mm
DIE-F35	35 Square hole dies set	35 Square	1/3'	4x4mm
DIE-Y35	35 Round hole dies set	35 Round	1/3'	Φ4mm

DIE-F23	23 Square hole dies set1	23 Square	1/2'	5x5mm
DIE-Y23	23 Round hole dies set	23 Round	1/2'	Φ5mm
DIE-Y49	49 hole dies set	49 Round	6mm	Φ4mm

Note: DIE -F21 can also fit the punching & binding requirement of Greenbinder

## 6. Parameter

·Machine dimension



·Net Weight

15 kgs

·Margin width

2mm/4mm/6mm/8mm

·Punch ability

25sheets(70-80g) per punch(All kinds of dies sets)

Cardboard <3mm per punch

Binding cover <1mm per punch

## 7. Caution

·Please read carefully the manual instruction and keep it in safe.

·Please check the series number which sticks at the back of machine when

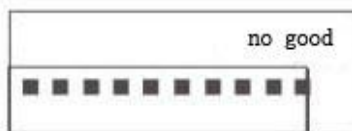
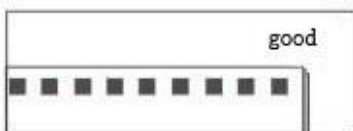
opening package, if there is no series label or it is unclear/incomplete, replace the machine with seller otherwise your after sales service may be refused.

- The machine weights around 30kgs, take care when moving. Working table should be steady.
- Away from water and keep machine dry.
- It is strictly prohibited to punch hard material such metal plate, when punching binding cover, the Maximum thickness should less than 1mm. Any damage caused by improper use will not be guaranteed.
- Before punching in batches, use one test paper to check Margin width and holes position both correct or not.
- Frequently empty water paper drawer to avoid jam.  
In the case of trouble, to solve the problem according to trouble shooting, otherwise call the distributor for repair. Don't open the machine by yourself.

## 8. Operation

·Before punching

- ① Confirm the die set on main body is what you need.
- ② Make sure die set lock is in CLOSE position.
- ③ Get the document sheet ready in order.
- ④ Adjust paper stop to set side position of paper to avoid sheets edge been damaged (see charts below). We have marked the position of A4 size paper on paper flat.

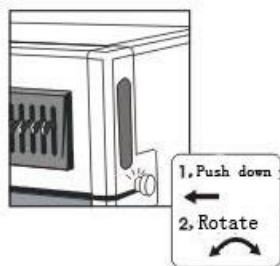
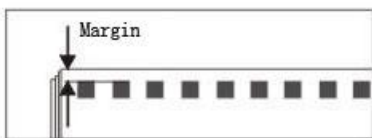


⑤

In the case 'No good', Please draw the disengagement pin out which corresponding to the broken place.

When use DIE-F35/Y35 Die set to punch A4size sheets, the right first disengagement pin should be pull out to avoid broken.

- ⑤ Push down and turn Margin Width adjuster to set margin width, there are 2/4/6/8mm four classes (See chart below).



- ⑥ Before punching in batches, use one test paper to check the side margin and margin width.

·Punch in order

- ① Align the document sheets and sliding into the paper entrance against paper stop, please don't insert punching sheets once too much otherwise the edge of punched holes will be coarse.
- ② Please operate under machine parameter permission.
- ③ Push down punching handle to punch.
- ④ After punching finished, take out the punched paper.

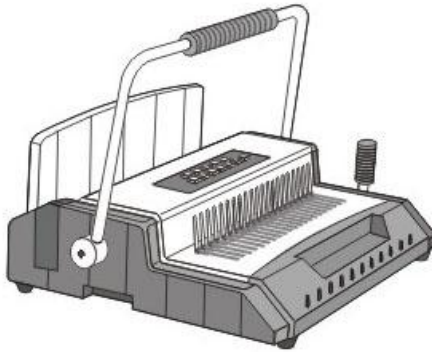
·Special size paper punching

- ① Paper longer than A4 should be punched twice. This should be achieved by adjusting Paper stop, Disengagement pins and using the slot at the side of paper entrance.
- ② Paper shorter than A4, the key point is to avoid paper edge broken, to pull out some disengagement pins can avoid this problem but should use suitable binding accessories.

⑥

· Binding

See Manual Instruction of S600-Multifunction Binder.



It can bind 21rings, 24rings plastic comb and 2:1/3:1Double wire.