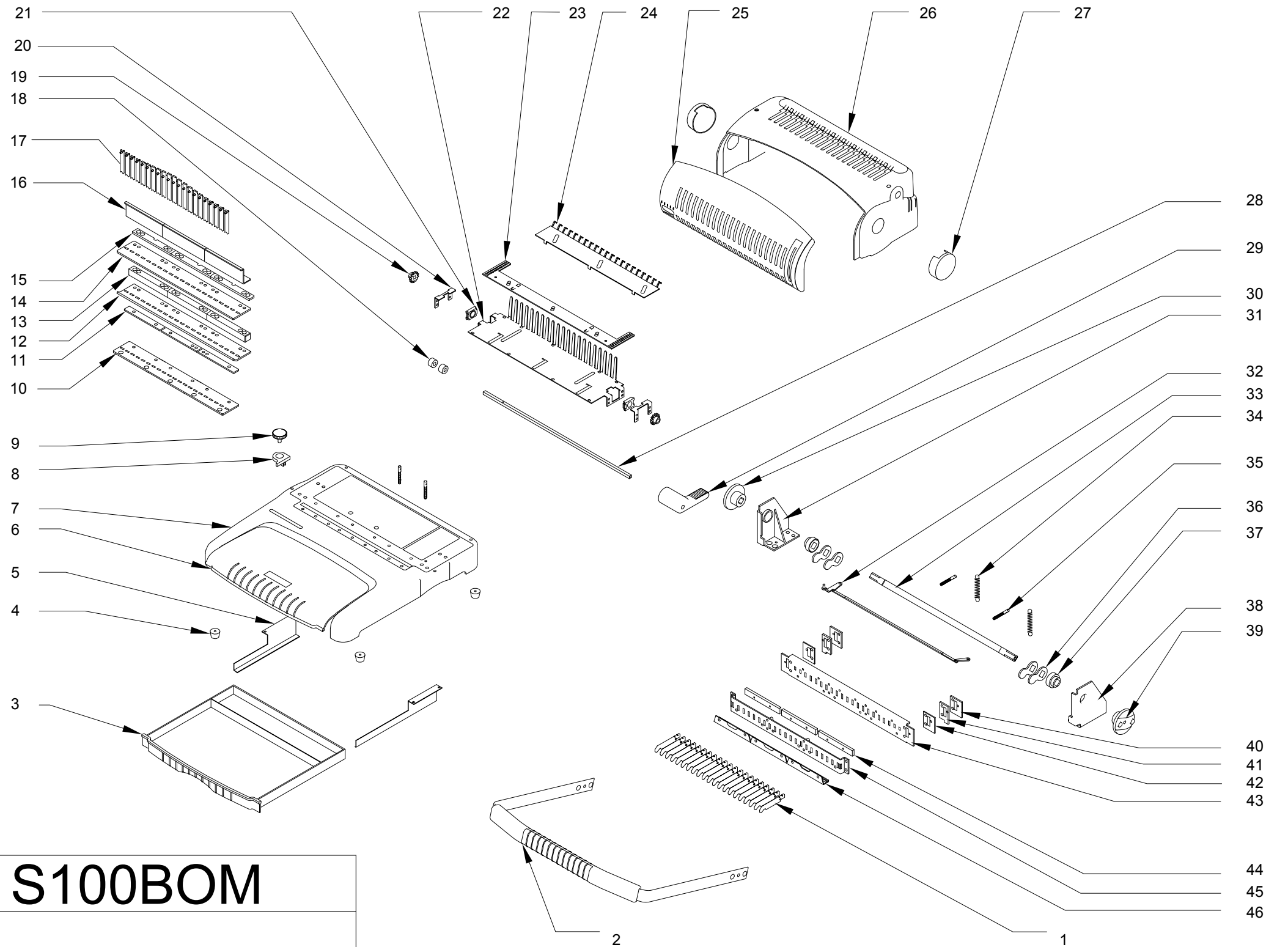


46	Punch pin lift	S60-32-01
45	Engagement pin support 2	S60-19-01
44	Spring base	S100-16-01/02
43	Engagement pin support 1	S68-11-01
42	Small plate 3	S100-19-01
41	Small plate 2	S100-20-01
40	Small plate 1	S100-18-01
39	Punch handle connect	S100-07-02
38	Right support	S100-02-02
37	Plastic bearing 1	S100-01-01
36	Cam	S100-10-01
35	Reset spring screw	S100-28-01/02
34	Reset spring	DE-16-001
33	Punch shaft	S100-03-01
32	Margin assembly	S100-11/12/15/17
31	Left support	S100-02-01
30	Punch handle connect	S100-07-01
29	Binding handle	S100-39-01
28	Binding shaft	S100-24-01
27	Side cover	S100-45-01
26	Main cover	S100-40-01
25	Front cover	S100-41-01
24	Binding plate 1	S60-07-01
23	Binding plate 2	S60-08-01
22	Main Binding plate	S60-06-01
21	Binding bearing	S100-26-01
20	Bearing support	S100-23-01
19	Binding gear	S100-25-01
18	Shaft sleeve	S100-21-01
17	Punch pin	S100-30
16	Pins cover plate	S100-09-01
15	Paddingt block 1	S100-54-02
14	Up guide plate	S60-16-02-1
13	Paddingt block 2	S60-12-02
12	Bottom guide plate	S60-15-02-1
11	Pading block 3	S100-06-01
10	Punch plate	S100-53-02
9	Paper stop screw	S100-36-01
8	Paper stop	S100-37-01
7	Base	S100-32-01
6	Base cover	S100-33-01
5	Drawer guide	S100-22-01/02
4	Rubber protector	S100-35-01
3	Waster paper drawer	S100-34-01
2	Punch handle	S100-27-01
1	Engagement pin	S100-08
Item	Desc.	Material No.



**S100BOM**