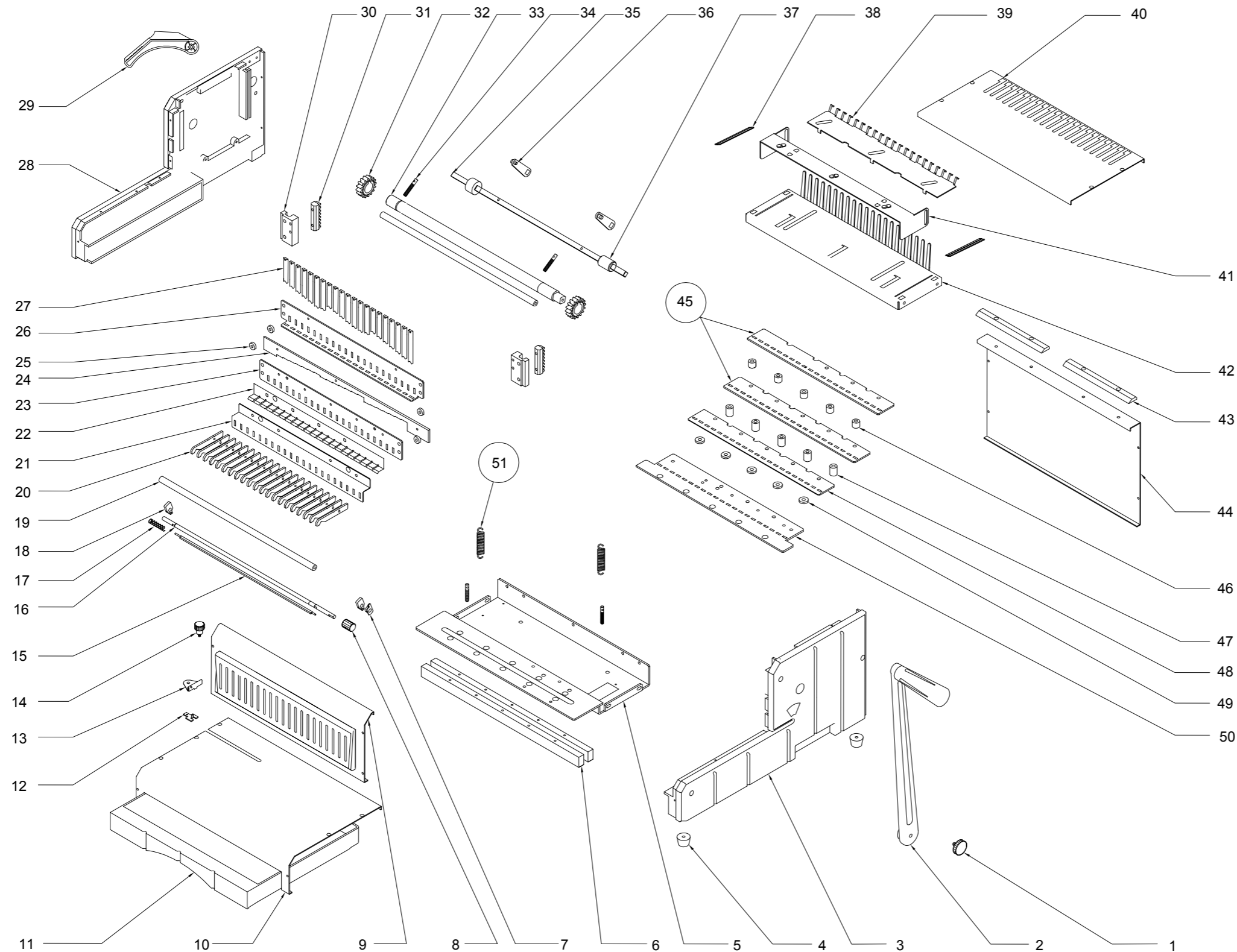


S160BOM



51	Reset spring	DE-16-001
50	Punch plate	S160-02-001
49	Washer 3	S310-02-006-01
48	Bottom guide plate	S60-15-02-1
47	Washer 2	S310-02-006-03
46	Washer 1	S310-02-006-02
45	Up guide plate	S60-16-02-1
44	Back cover	S160-04-006-01
43	Plastic comb support	S68-08-01
42	Main binding plate	D160-03-003
41	Binding plate 2	S160-03-04
40	Top cover	S160-04-005
39	Binding plate 1	S60-07-01
38	Adjustment plate	S160-04-09
37	Bearing	S160-03-006/007
36	Drivng lever	S160-03-001/002
35	Binding shaft	S160-03-005
34	Spring screw	S100-28-01/02
33	Punch shaft	S310-02-012-01
32	Punch gear	S310-01-014
31	Rack	S310-02-014
30	Rack base	S310-02-013-01/02
29	Binding handle	S160-02-016
28	Left frame	S160-01-001
27	Punch pin	S160-02-005
26	Engagement pin support 3	S160-02-007
25	Washer	S300-02-008
24	Press plate	S160-04-06-1
23	Engagement pin support 2	S160-02-009
22	Spring chip	S160-02-010
21	Engagement pin support 1	S160-02-011
20	Engagement pin	S310-02-012
19	Round beam	S310-01-006
18	Shifting fork	S310-03-012
17	Margin spring	S310-03-020
16	Margin shaft	S310-03-016
15	Margin bar	S310-03-011
14	Paper stop/Binding knob	S310-03-019
13	Paper stop	S310-03-017
12	Paper stop set	S310-03-018
11	Waste paper drawer	S310-01-003
10	Down-front cover	S160-04-01
9	Up-front cover	S160-04-002
8	Margin knob	S310-03-014
7	Margin set	S310-03-013
6	Square beam	S310-01-004
5	Bottom plate	S310-01-005
4	Rubber protector	S100-35-01
3	Right Frame	S160-01-002
2	Punch handle	S310-01-011
1	Handle screw	S60-26-01
Item	Desc.	Material No.